

DEEP TIMBER LOG SET INSTALLATION INSTRUCTIONS

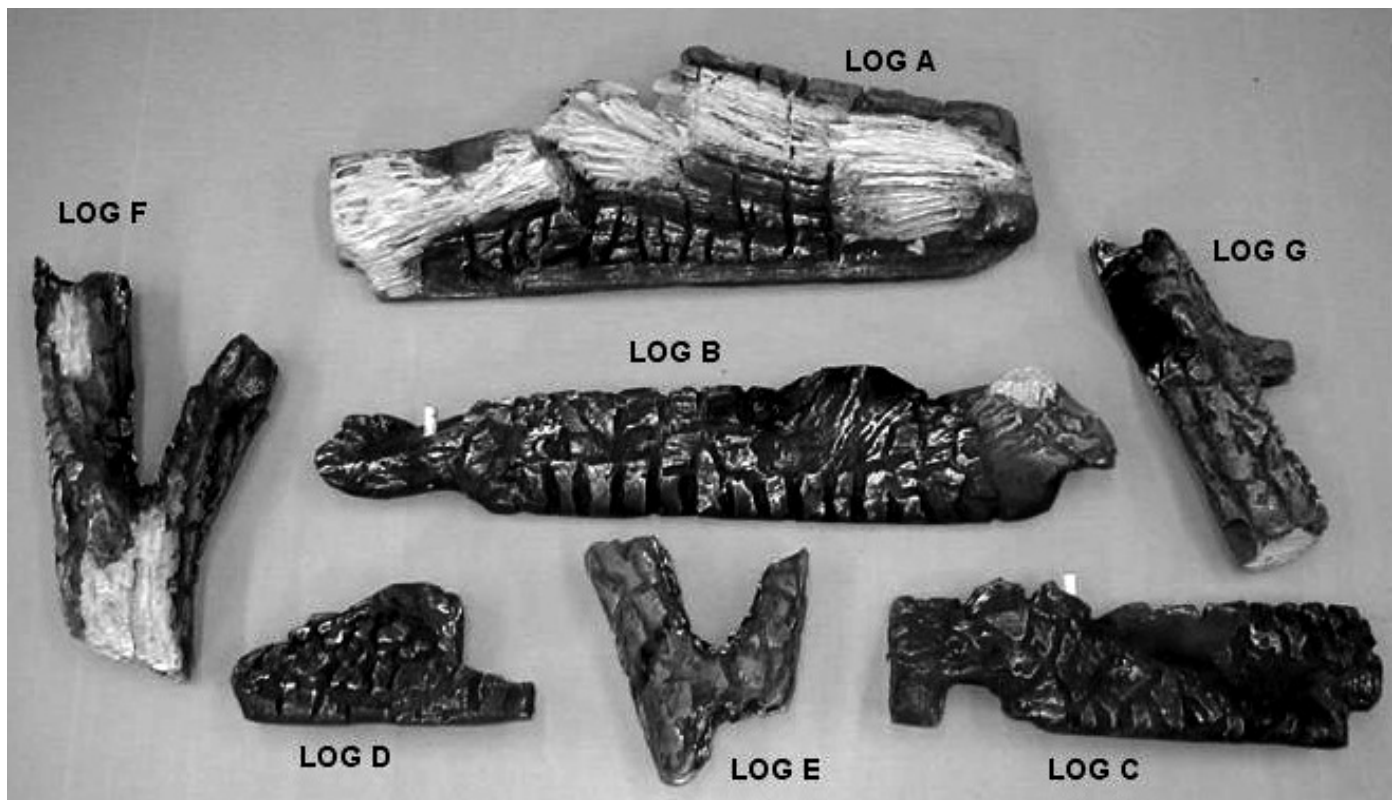
With door removed, carefully remove the shipping foam pack, containing the logs, from inside the firebox.

1. Cut the clear tapes and outer plastic wrap using a sharp utility knife or equivalent. Locate the 2 bags of coals and the log pieces. Identify each log piece, A-F and the Large Chunk coals and Small coals per the diagrams show on this page:



LARGE CHUNK COALS

SMALL COALS



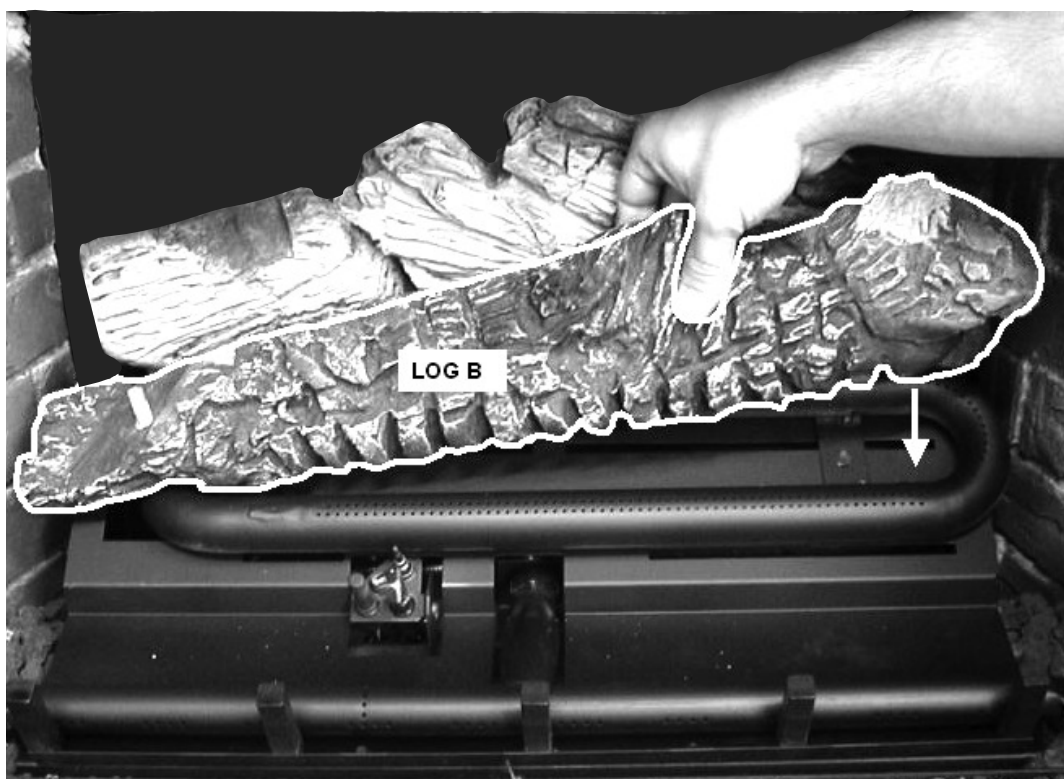
Disclaimer:

*All figures in the following sections are for representation purposes only.
Your model may vary slightly from those pictured below!*

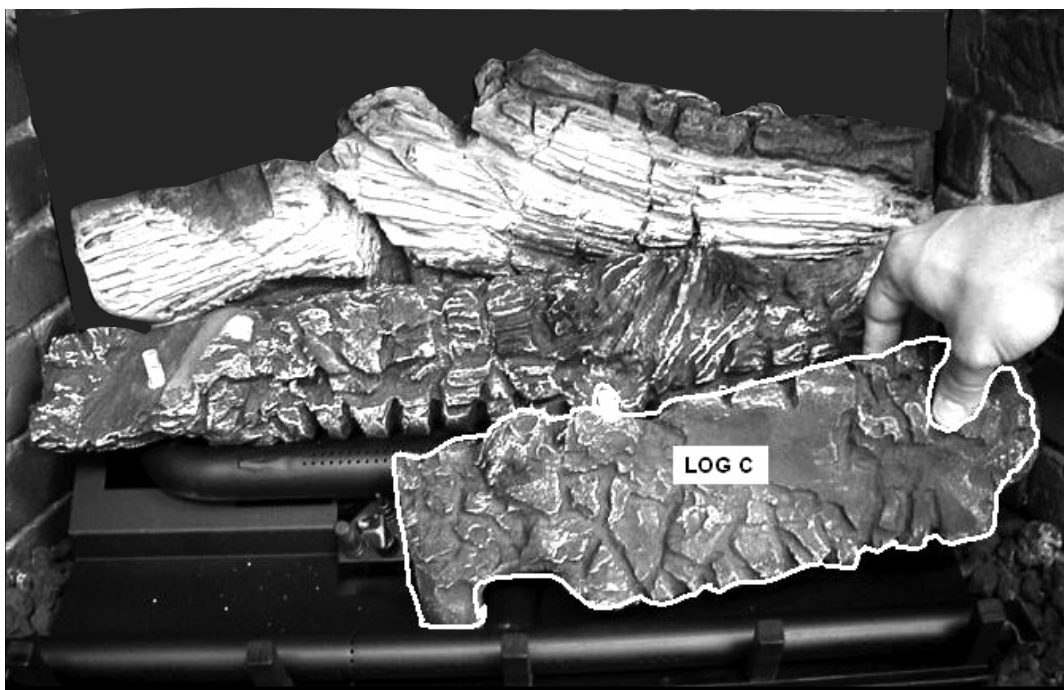
2. Place Log "A" between Rear Brick Panel and rear-most burner tube – centered left to right in firebox. NOTE: FOR USE WITH NATURAL GAS, SLIDE THIS LOG FORWARD UNTIL FRONT SURFACE TEXTURE OF LOG TOUCHES THE REAR BURNER LEG. FOR USE WITH LP GAS, SLIDE TOWARDS THE REAR OF FIREBOX SO THAT THERE IS A ¼" GAP BETWEEN FRONT SURFACE TEXTURE OF LOG AND THE REAR BURNER LEG.



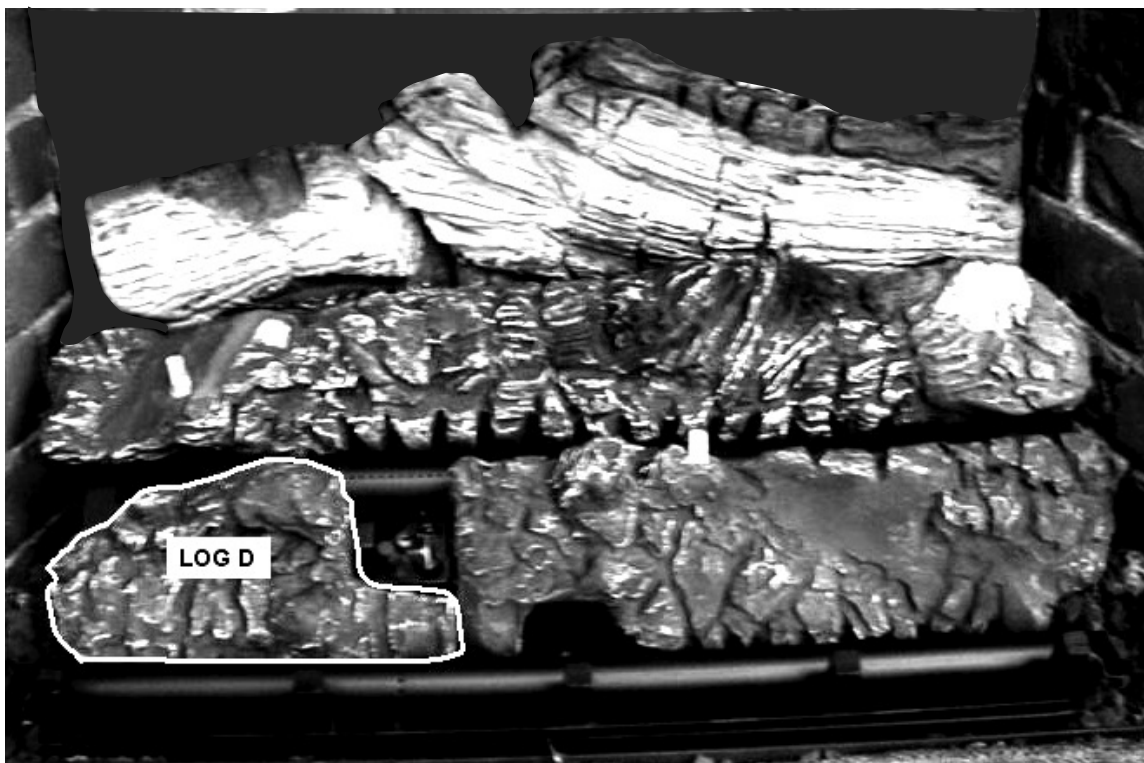
3. Place Log B between rear-most burner and middle burner tube as shown below. Slide Log "B" to the right as far as possible. The tilt angle of this log will be fixed in subsequent steps as you install Logs "F" and "G".



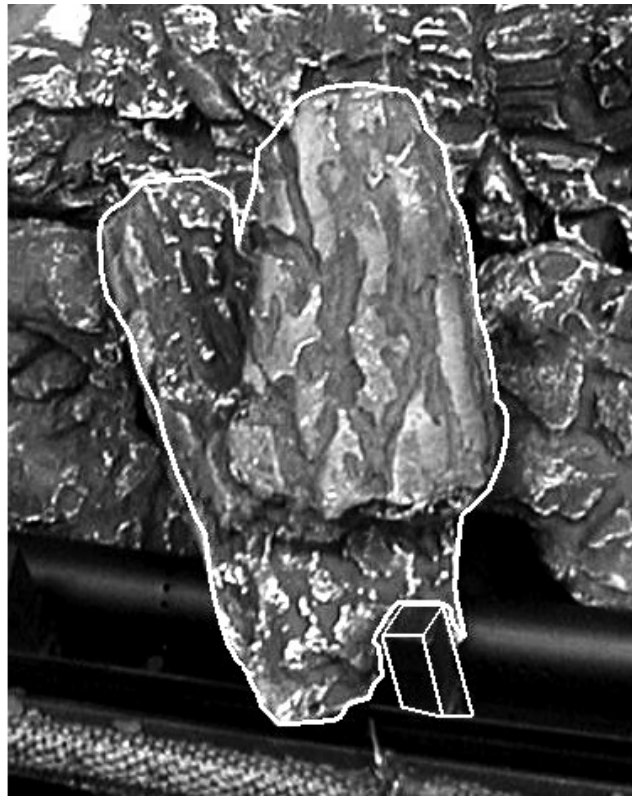
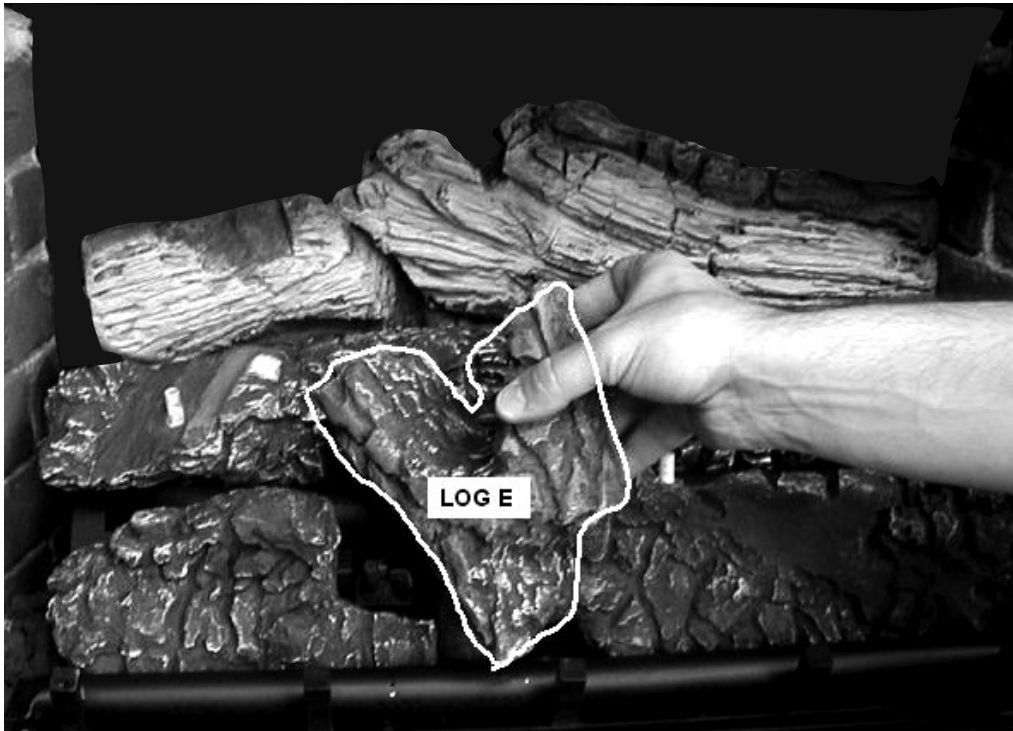
4. Place right front log “C” behind front burner as shown. Front to Back; place this log so that its rear-most edge is 1/8” away from the center burner tube. Adjustments to this location can be made later during Log “G” installation.



5. Place left front log “D” behind front burner and in front of Pilot Light, as shown. Butt Log “D” against Log “C”.

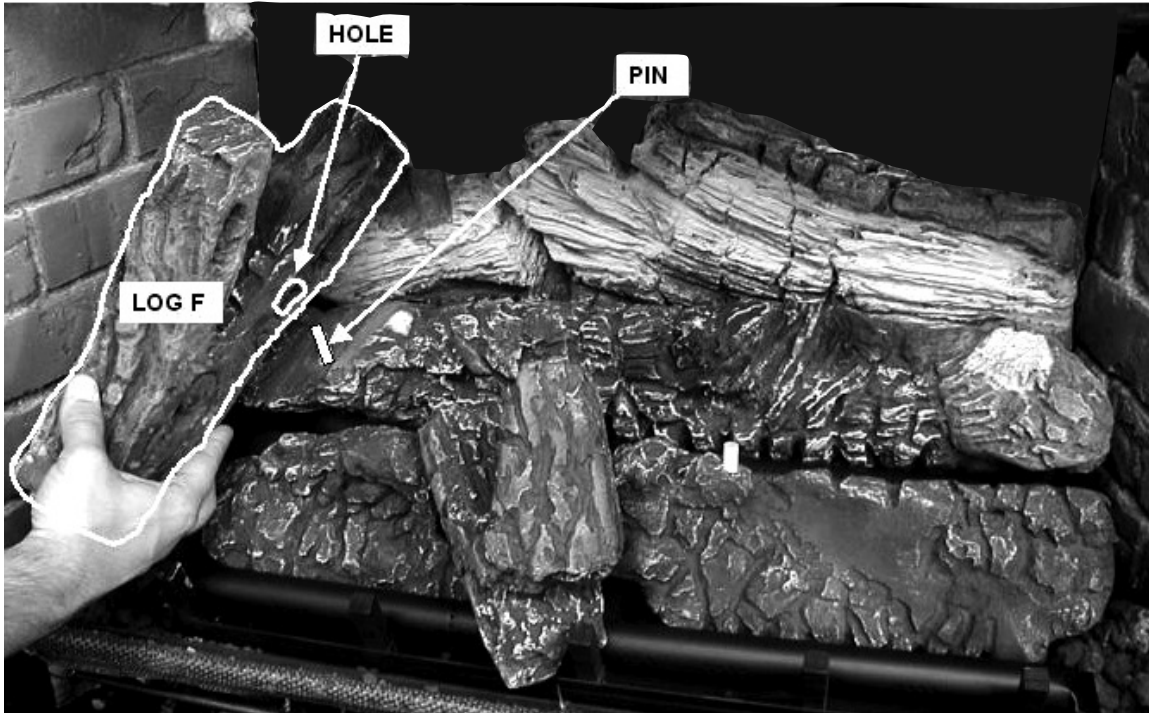


- Place log “E” as shown below – Between Logs “C” and “D” to cover the Pilot Light. Look at the diagram at the bottom of this page to determine the exact position of this log. This log should use the center Log Iron bar for support.



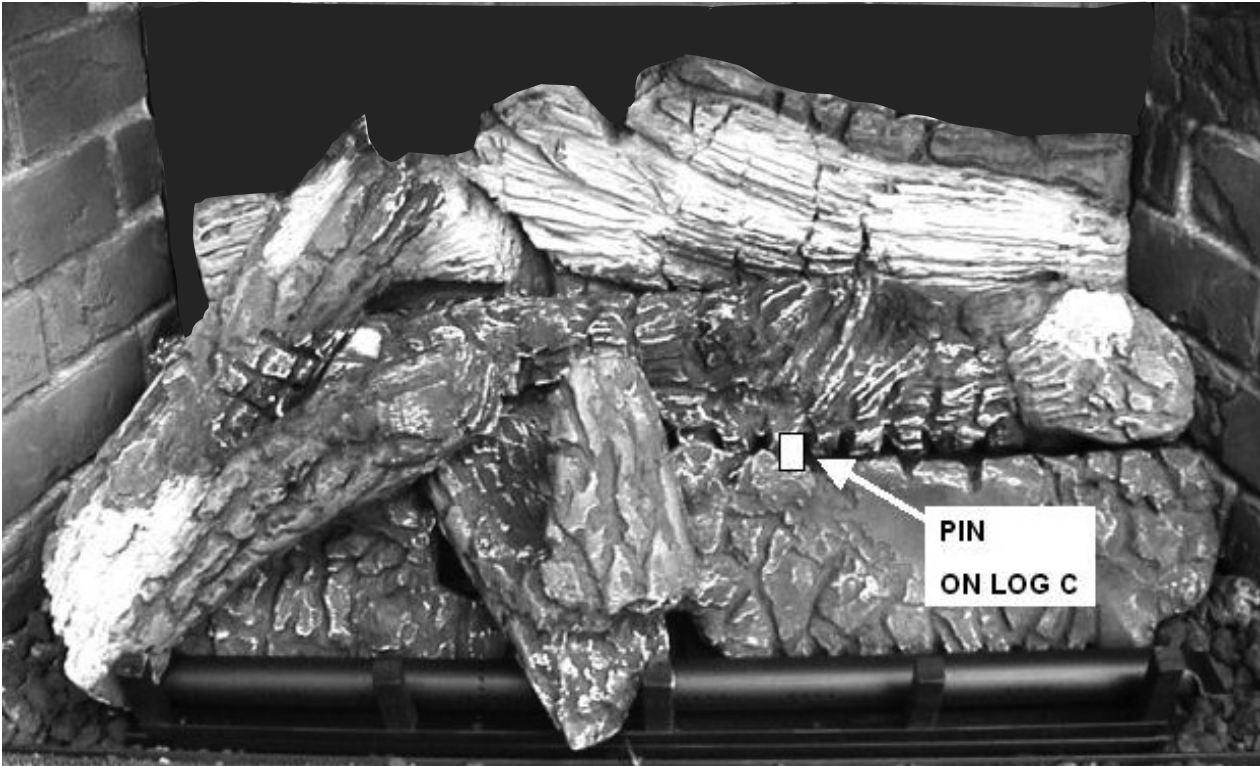
Log E must rest on Center Log Iron Bar as shown above.

7. Place left front log "F" as shown in the diagram below. Identify Pin on Log "B" and Hole in Log "F". Place Log "F" so that the hole in log "F" falls over Pin in log "B", see diagram below. Front right corner of Log "F" must rest on left-most Log Iron Bar as shown in the next diagram.

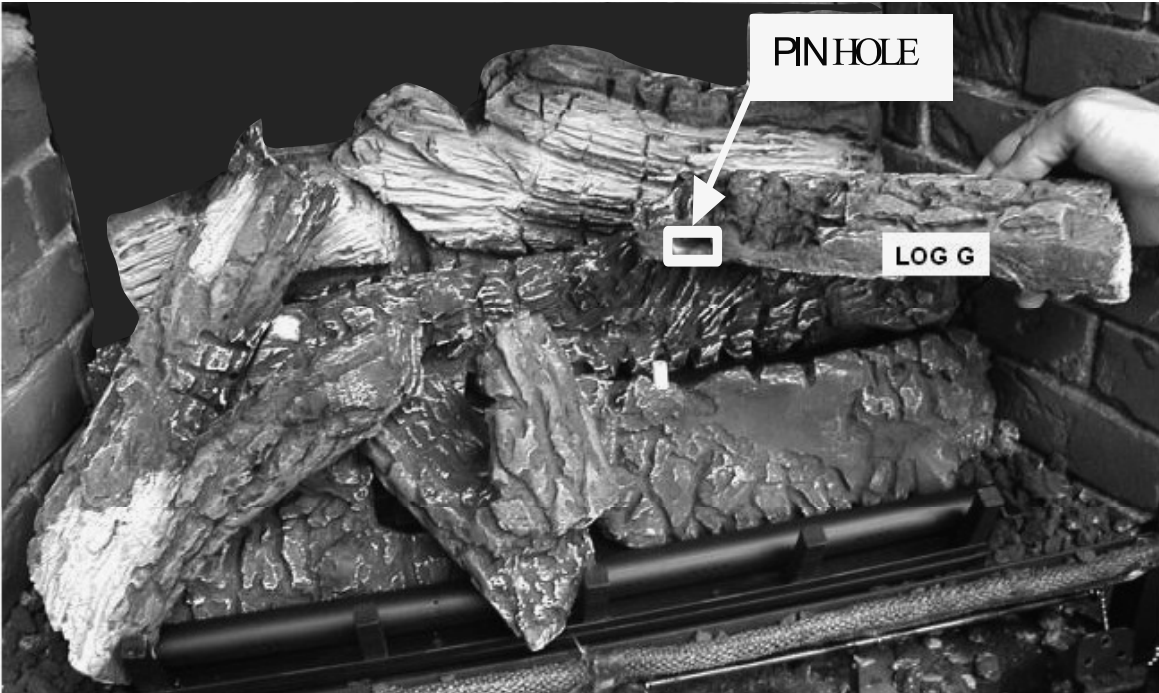


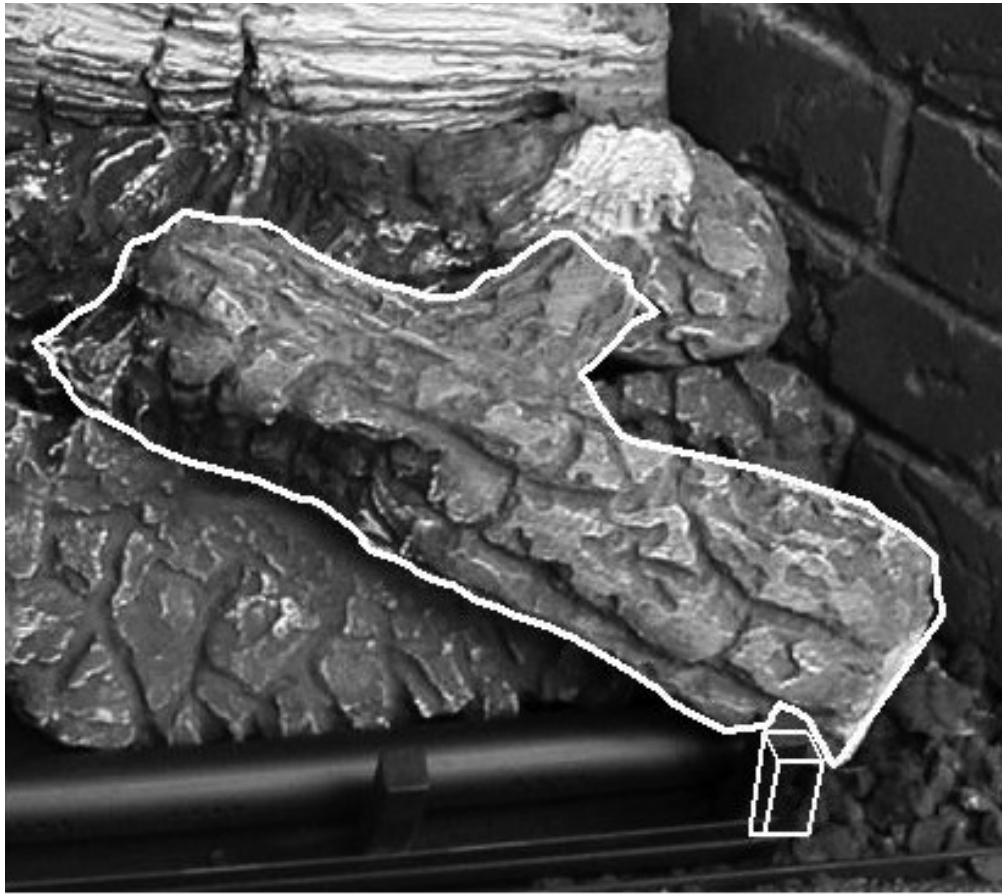
LOG "F" LOCATION

Make Certain that the front right corner of Log "F" sits on the left-most Log Iron Bar as Shown in the diagram, above.



8. Place right log “G” as shown below – Front right end against right-most log iron bar and the Pin Hole, shown, over pin in LOG “C”. Also see diagram in the next page for exact location of Log “G”.





Front corner of Log "G" must rest on right-most Log Iron Bar. This locates Log "G" properly.



FILL AREA IN FRONT OF BURNER WITH SMALL COALS

9. Carefully place large chunk coals on log "C" and "D" - between front and middle burner - in a loose pattern. Make sure that the coals are not packed too tightly and are only one layer deep. **KEEP PASSAGES CLEAR AROUND EACH COAL AS MUCH AS POSSIBLE.** This assures flame travel around each coal, and a bright glow. Sixteen Large Chunk coals are provided in the bag. You need only use approximately 9 Large Chunk Coals during initial installation. Save the rest for future replacement. To achieve yellow flames over the front ember bed and the front burner, close front burner air shutter in 1/8" increments until desired flame appearance is achieved. If sooting occurs on front logs or coals, rearrange coals or open front burner air shutter in 1/8" increments until sooting is eliminated.



Add Large Chunk Coals behind front burner and on Logs "C" and "D" surfaces. Space Coal Chunks apart at least 1/4" where they touch the Front Burner to allow upward flow paths for Front Burner Flames.

